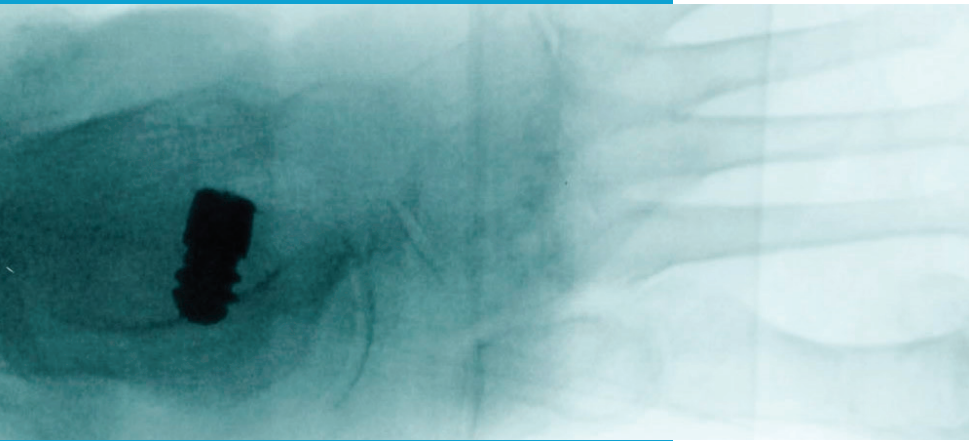




**CORVUS Subtalar
Implant System**

PRODUCT INFORMATION



Contents

Introduction	3
Features	3
Instrumentation	4
Ordering Information	6



HNM Total Recon is committed in providing surgeons and health care professionals with advanced surgical solutions for effective and time-saving treatment of their patients. Our most important task is meeting surgeons' needs. We accomplish this by creating key partnerships and driving innovative product development.

📍 20855 Northeast 16th Avenue, Suite C15
Miami, Florida 33179

☎ 1.866.291.8498 ✉ info@hnmtotal.com

📞 1.888.608.9788 🌐 www.hnmtotal.com



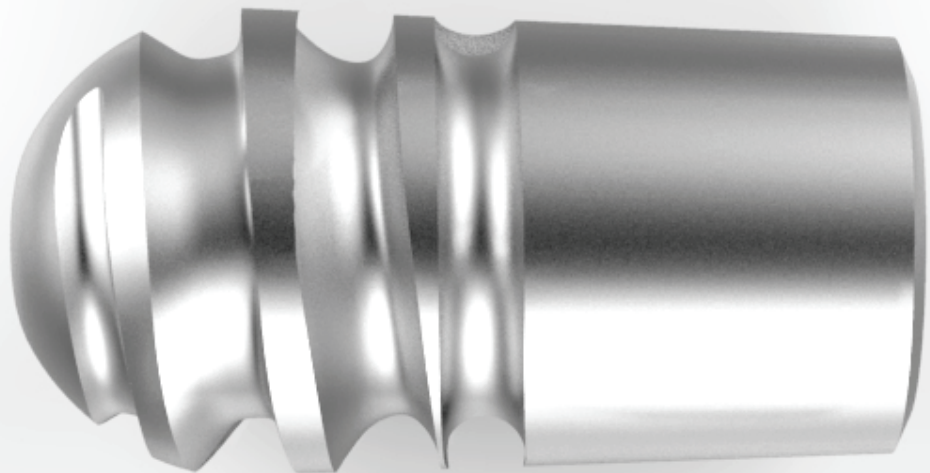
CORVUS SUBTALAR

IMPLANT SYSTEM

The CORVUS Subtalar implant is used for the treatment of flatfoot in both children and adults. It is designed to block excessive pronation while allowing normal subtalar joint motion. The design of the CORVUS Subtalar implant incorporates a smooth, slightly tapered lateral trailing edge; assuring that the talus makes contact with a smooth, flat surface when the foot is pronated, not a sharp thread.

FEATURES

- Tapered edge minimizes sinus tarsi
- Smooth lateral edge minimizes further arthrosis
- Simple insertion and forgiving learning curve prevents over-correction

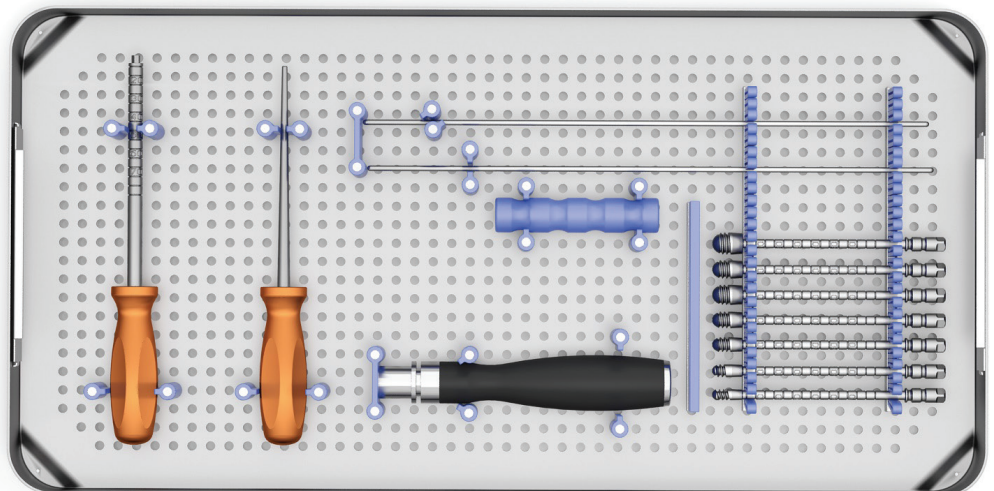
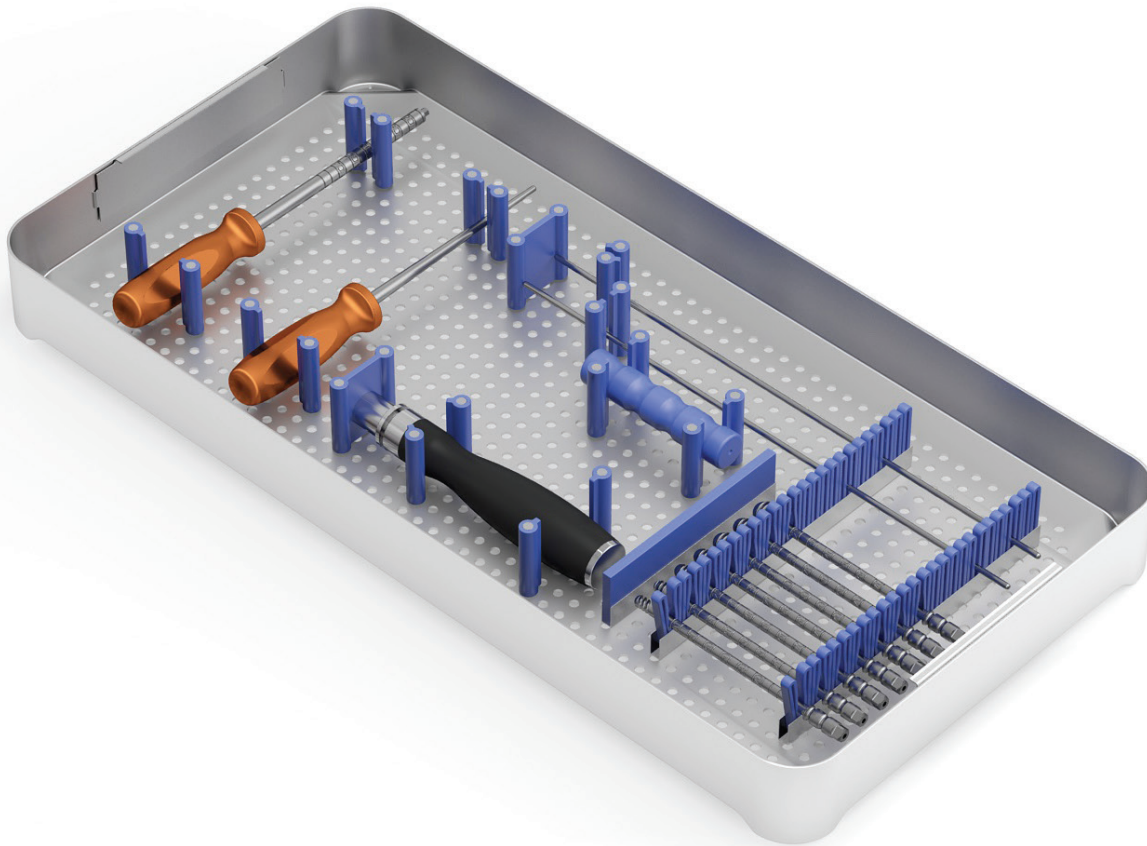




INSTRUMENTATION

CORVUS SUBTALAR BASIC INSTRUMENT SET

HTR-01-730907

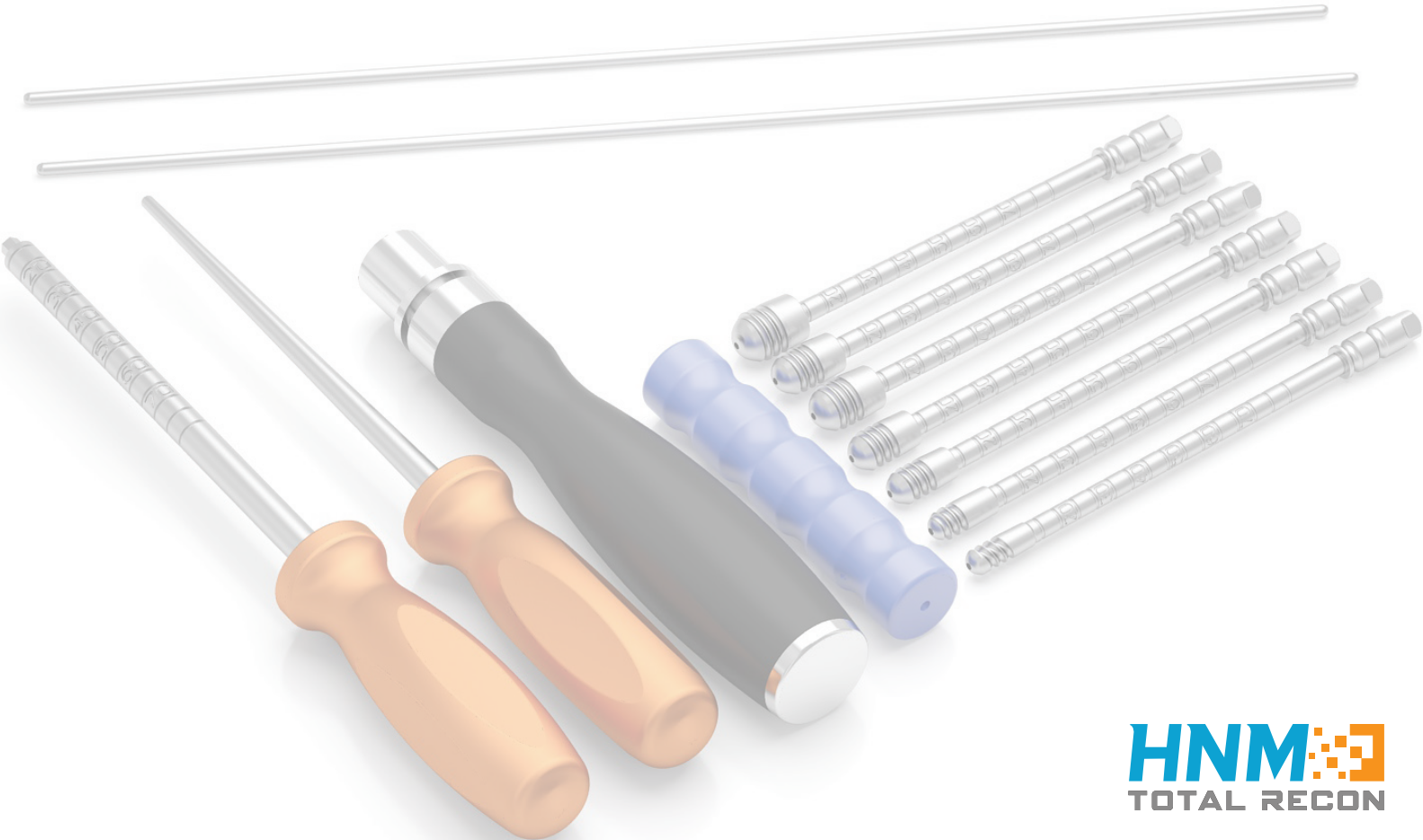




CONTENT

BASIC INSTRUMENTS

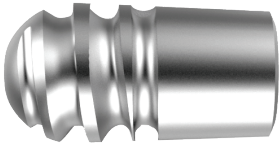
Item #	Description	Pcs.
HTR-01-740879	CORVUS Trial Implant 6mm	1
HTR-01-710990	CORVUS Trial Implant 8mm	1
HTR-01-711091	CORVUS Trial Implant 9mm	1
HTR-01-710192	CORVUS Trial Implant 10mm	1
HTR-01-710293	CORVUS Trial Implant 11mm	1
HTR-01-710394	CORVUS Trial Implant 12mm	1
HTR-01-179500	CORVUS Trial Handle	1
HTR-01-720428	CORVUS Hex Driver	1
HTR-01-720730	8" CORVUS Guide Wire	2
HTR-01-740855	CORVUS Starter Probe	1
HTR-01-750923	Pin Guide	1
HTR-01-720780	Tray for CORVUS Subtalar Basic Instrument Set	1





ORDERING INFORMATION

CORVUS SUBTALAR



Size	Item #
6 mm	HTR-01-740178
8 mm	HTR-01-720221
9 mm	HTR-01-720322
10 mm	HTR-01-720423
11 mm	HTR-01-720524
12 mm	HTR-01-720625

This image shows a full page of blank, lined paper. It features approximately 20 evenly spaced horizontal grey lines across its entire width, typical of notebook or legal stationery. The background is a solid off-white color, and there are no margins, text, or other markings present.



📍 20855 NE 16 Ave Suite C15, Miami, FL 33179

☎ 1.866.291.8498

📠 1.888.608.9788

✉ info@hnmtotal.com

🌐 www.hnmtotal.com