

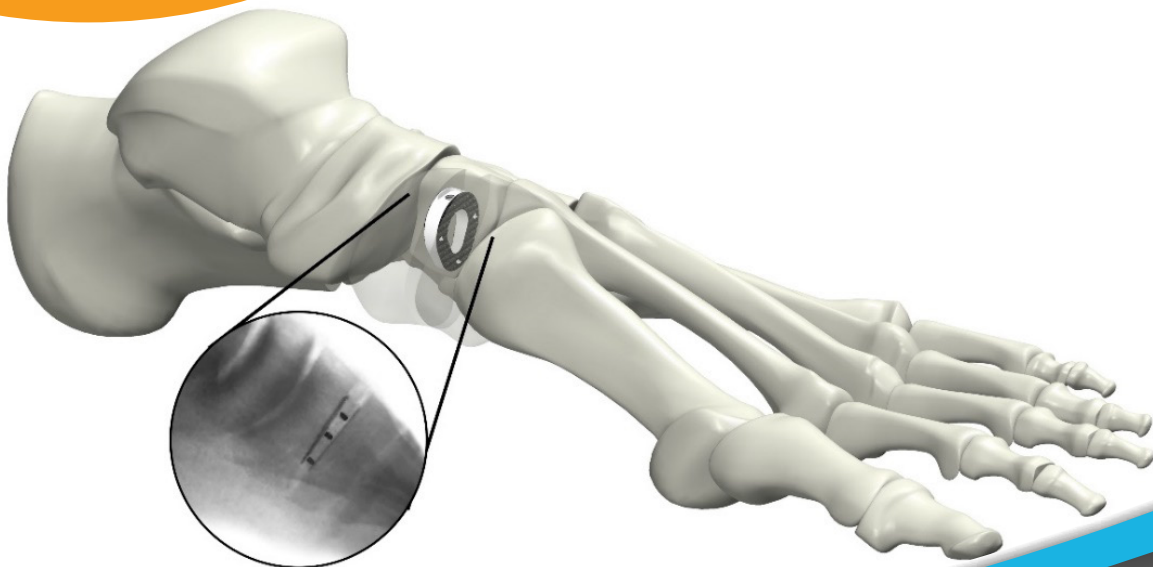
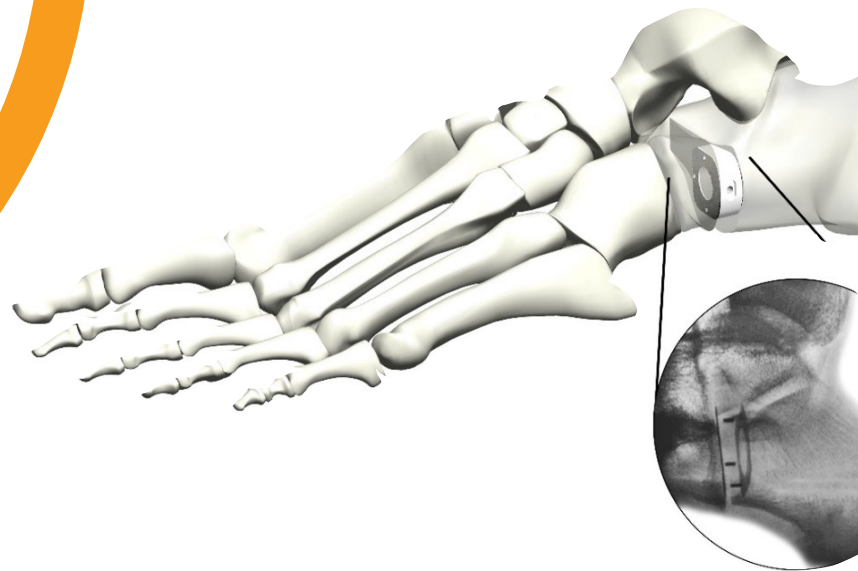
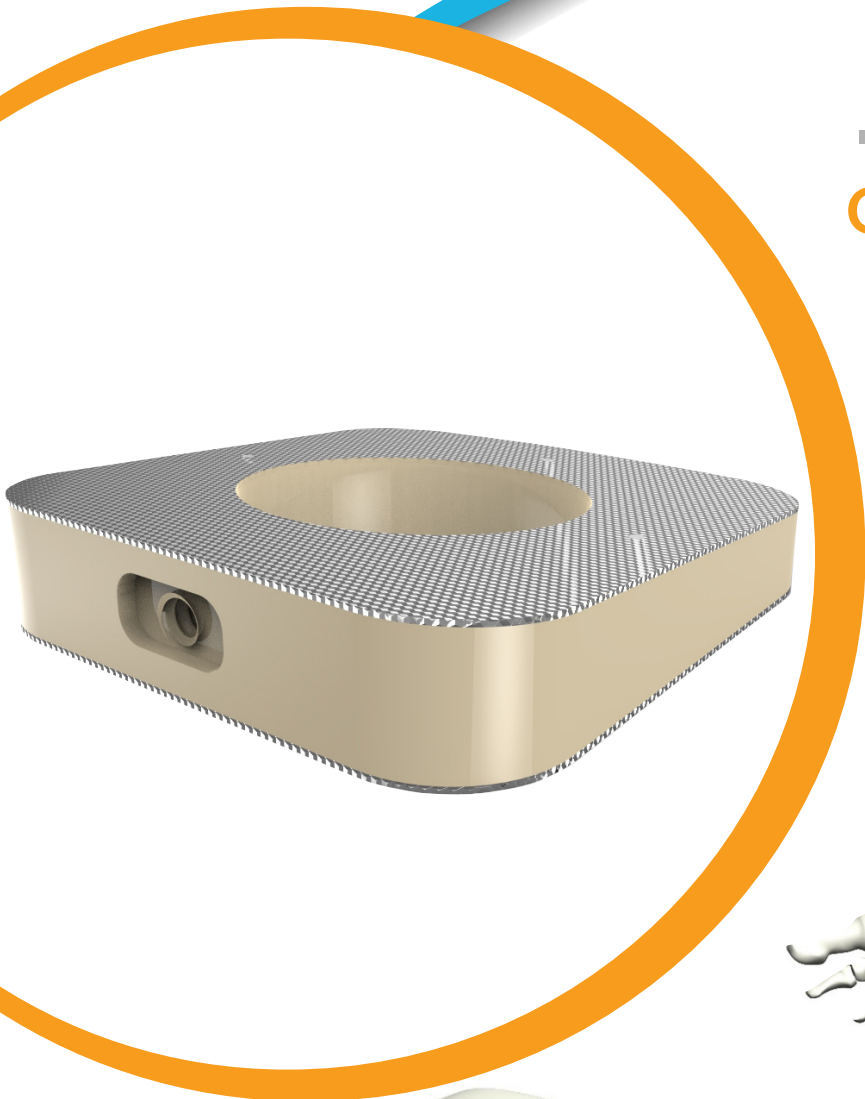
# **HNM**

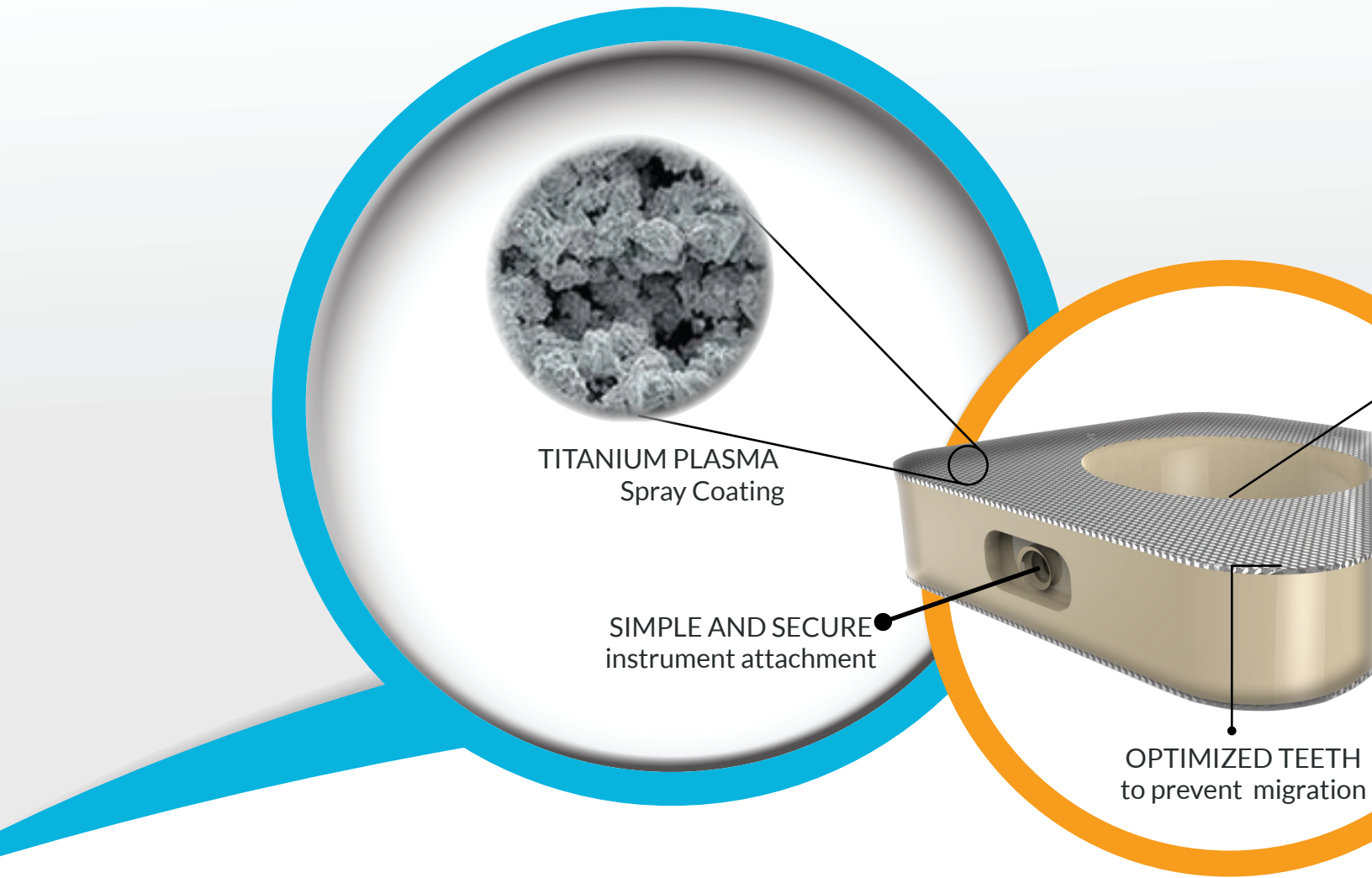
**TOTAL RECON**

---

## **ORION Foot Osteotomy Wedge System**

**PRODUCT INFORMATION**





TITANIUM PLASMA  
Spray Coating

SIMPLE AND SECURE  
instrument attachment

OPTIMIZED TEETH  
to prevent migration

## ORION OSTEOTOMY

# WEDGE SYSTEM



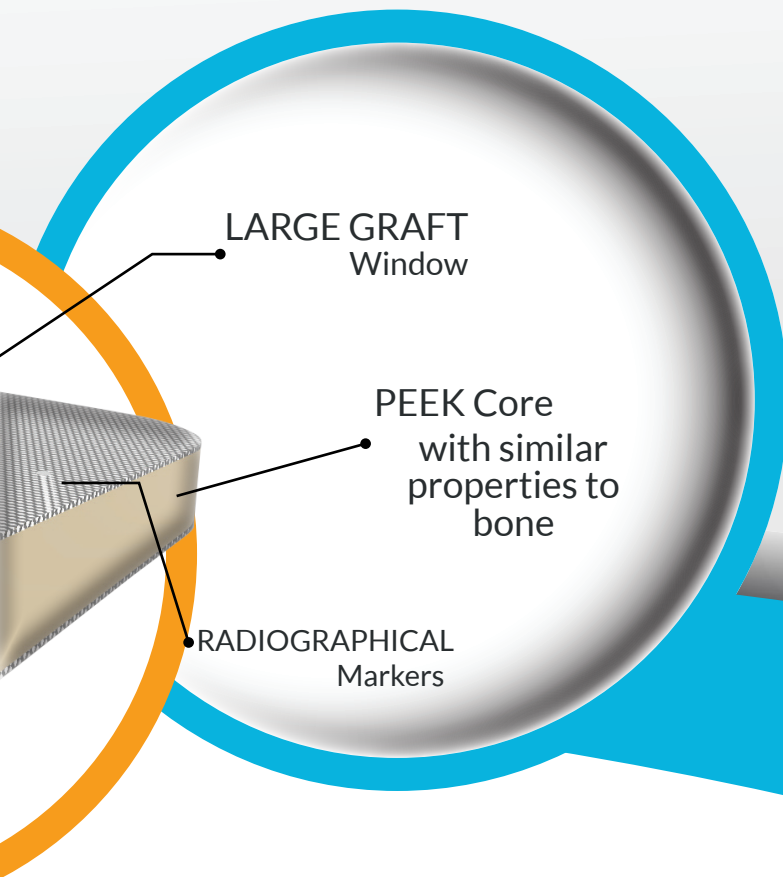
HNM Total Recon is committed in providing surgeons and health care professionals with advanced surgical solutions for effective and time-saving treatment of their patients. Our most important task is meeting surgeons' needs. We accomplish this by creating key partnerships and driving innovative product development.

## ► Contents

►	Features and Benefits	3
►	Indications	4
►	Evans Wedge Implants	5
►	Cotton Wedge Implants	6
►	Instrumentation	7

## ORION OSTEOTOMY

## WEDGE SYSTEM



## FEATURES AND BENEFITS

The comprehensive and versatile ORION Osteotomy Wedge device was designed for ease of use. The implant offers the following advantages:

- Radiolucent body with properties similar to bone
- Ti PEEK Titanium plasma spray coated PEEK **specifically indicated for fusion**
- Initial stability through an optimized tooth profile with a high friction surface
- Versatile, uncompromised angular correction
- Sterile implant configuration optimized for allograft or autograft containment
- Simple instrumentation designed for implant holding and impaction
- Simple radiographic markers for precise placement
- Titanium plasma sprayed coating on PEEK has been shown to encourage osteointegration [Walsh et. al., 2015]



## INDICATIONS

### PEEK System Indications

The ORION Osteotomy Wedge System is intended to be used for internal bone fixation for bone fractures or osteotomies in the ankle and foot such as:

#### Cotton and Evans Wedges

- Opening wedge osteotomies of the bones of the foot including osteotomies for Hallux Valgus
- Opening wedge of Medial Cuneiform of Cotton osteotomies
- Lateral Column Lengthening (Evans Lengthening Osteotomy or Calcaneal Z Osteotomy)

#### Midfoot Wedges

- Opening wedge osteotomies of the bone of the foot including osteotomies for Hallux Valgus
- Nonunion of arthrodesis of the Midfoot including Metatarsal/Cuneiform arthrodesis (TMT or Lapidus)

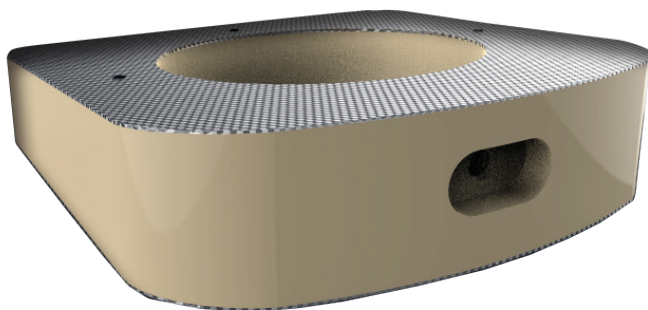
### Ti PEEK System Indications

The ORION Ti Osteotomy Wedge System is intended to be used for internal bone fixation for bone fractures, **fusions**, or osteotomies in the ankle and foot such as:

#### Cotton and Evans Wedges

- Opening wedge osteotomies of the bones of the foot including osteotomies for Hallux Valgus
- Opening wedge of Medial Cuneiform of Cotton osteotomies
- Lateral Column Lengthening (Evans Lengthening Osteotomy or Calcaneal Z Osteotomy)

#### Midfoot Wedges

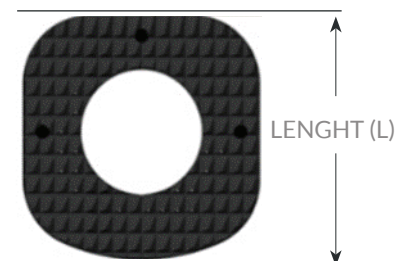
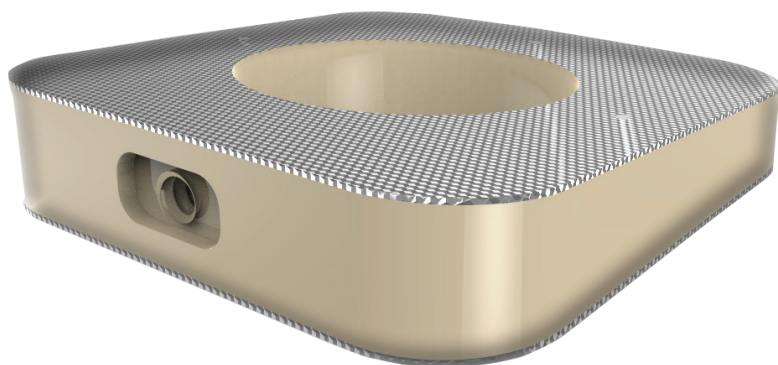


- Opening wedge osteotomies of the bone of the foot including osteotomies for Hallux Valgus
- Nonunion of arthrodesis of the Midfoot including Metatarsal/Cuneiform arthrodesis (TMT or Lapidus)



# EVANS WEDGE IMPLANTS

## DIMENSIONS



### ORION PEEK EVANS Wedge

Height	Length x Width		
	18 x 18	20 x 20	22 x 22
8	HTR-04-184008	HTR-04-204308	HTR-04-224608
10	HTR-04-184110	HTR-04-204410	HTR-04-224710
12	HTR-04-184212	HTR-04-204512	HTR-04-224812

### ORION Ti PEEK EVANS Wedge

Height	Length x Width		
	18 x 18	20 x 20	22 x 22
8	HTR-04-184508	HTR-04-204808	HTR-04-224208
10	HTR-04-184610	HTR-04-204910	HTR-04-224310
12	HTR-04-184712	HTR-04-204112	HTR-04-224412

\*All Ti PEEK implants are packaged sterile

### APPROXIMATE Autograft Volume

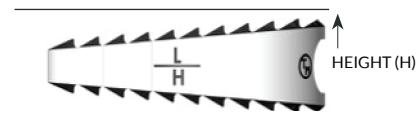
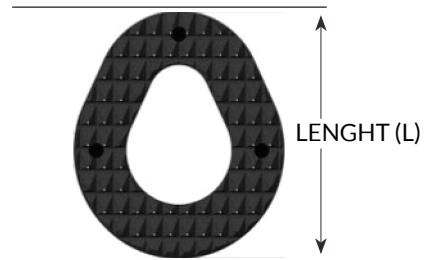
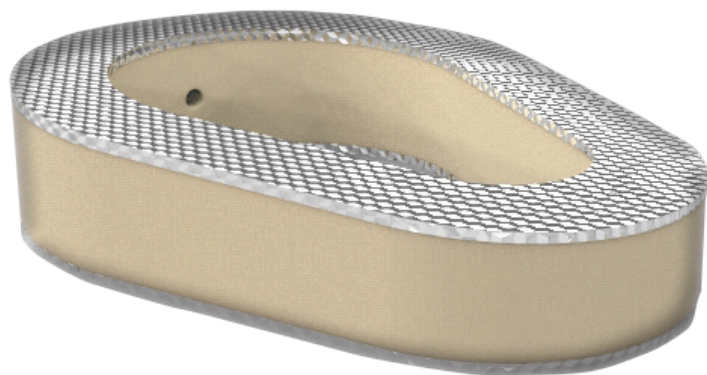
Height	18 x 18	20 x 20	22 x 22
8	0.51 cc	0.74 cc	1.00 cc
10	0.59 cc	0.85 cc	1.15 cc
12	0.67 cc	0.96 cc	1.31 cc





# COTTON WEDGE IMPLANTS

## DIMENSIONS



### ORION PEEK COTTON Wedge

Height	Length x Width	
	16 x 14	20 x 14
4.5	HTR-04-164904	HTR-04-204204
5.5	HTR-04-164005	HTR-04-204305
6.5	HTR-04-164106	HTR-04-204406

### ORION Ti PEEK COTTON Wedge

Height	Length x Width	
	16 x 14	20 x 14
4.5	HTR-04-164504	HTR-04-204804
5.5	HTR-04-164605	HTR-04-204905
6.5	HTR-04-164706	HTR-04-204106

\*All Ti PEEK implants are packaged sterile

### APPROXIMATE Autograft Volume

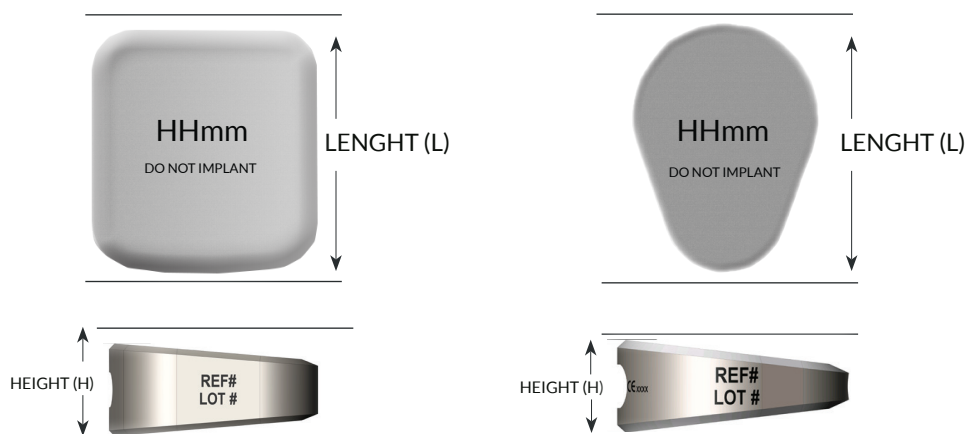
Height	16 x 14	20 x 14
4.5	0.17 cc	0.25 cc
5.5	0.20 cc	0.27 cc
6.5	0.22 cc	0.31 cc



# INSTRUMENTATION

## ORION OSTEOTOMY WEDGE INSTRUMENT SET

HTR-04-003300



### ◀ EVANS TRIALS

Item #	Description	Qty
HTR-04-804585	Evans 18 x 8mm Trial	1
HTR-04-814605	Evans 18 x 10mm Trial	1
HTR-04-814725	Evans 18 x 12mm Trial	1
HTR-04-004885	Evans 20 x 8mm Trial	1
HTR-04-014905	Evans 20 x 10mm Trial	1
HTR-04-014025	Evans 20 x 12mm Trial	1
HTR-04-204185	Evans 22 x 8mm Trial	1
HTR-04-214205	Evans 22 x 10mm Trial	1
HTR-04-214325	Evans 22 x 12mm Trial	1

### ◀ COTTON TRIALS

Item #	Description	Qty
HTR-04-604445	Cotton 16 x 4.5mm Trial	1
HTR-04-604555	Cotton 16 x 5.5mm Trial	1
HTR-04-604665	Cotton 16 x 6.5mm Trial	1
HTR-04-004745	Cotton 20 x 4.5mm Trial	1
HTR-04-004855	Cotton 20 x 5.5mm Trial	1
HTR-04-004965	Cotton 20 x 6.5mm Trial	1

### ◀ INSTRUMENTS

Item #	Description	Qty
HTR-04-004002	Straight Rod Inserter	1
HTR-04-004114	Hintermann Distractor	1
HTR-04-004203	ø2.4mm Pin (6")	1
HTR-04-014316	"V" Tamp 6"	1
HTR-04-004400	Wedge Instrument Set	1



# HNMTOTAL

## TOTAL RECON

📍 20855 NE 16 Ave Suite C15, Miami, FL 33179

☎ 1.866.291.8498

📠 1.888.608.9788

✉ info@hnmtotal.com

🌐 www.hnmtotal.com